

A TEC: ASESORÍA TÉCNICA Y ESTUDIOS COSTEROS



ATEC
Asesoría Técnica y
Estudios Costeros

An aerial photograph of a lush mangrove forest. A narrow, winding waterway or canal cuts through the dense green canopy of trees. The water is dark and reflects the surrounding foliage. The trees have a complex root system visible through the water and soil. The overall scene is a vibrant green, indicating a healthy ecosystem.

The company was founded in 2007 by a group of specialists committed to the generation of technical and scientific information applied to the protection, management, and restoration of marine ecosystems.



ATEC
Asesoría Técnica y
Estudios Costeros

To offer innovative and sustainable solutions that contribute meaningfully to the preservation of coastal ecosystems. .

MISSION



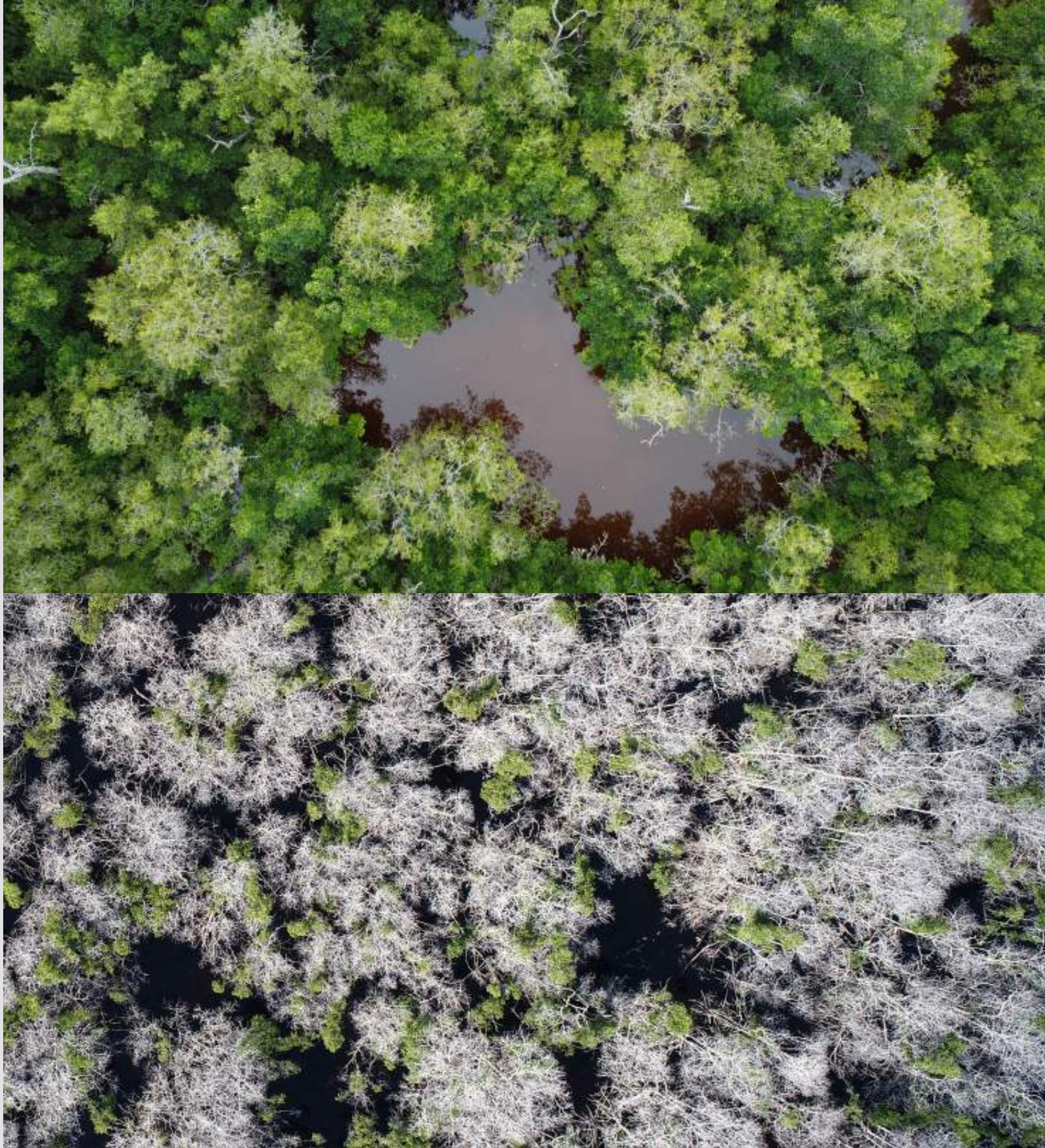
ATEC
Asesoría Técnica y
Estudios Costeros

VISION

To envision ecosystems being protected and respected as essential pillars of biodiversity, and to be recognized as the leading firm in technical advisory for their preservation and restoration.



NUESTROS SERVICIOS



ECOSYSTEM PRESERVATION AND RESTORATION

We implement methods and techniques for forensic ecology and ecological assessment of systems to generate information that enables the implementation of preservation and restoration actions.

We promote and support hydrological and sedimentological restoration actions, as well as assisted natural regeneration in mangroves and dunes.



BIODIVERSITY DIAGNOSIS AND MONITORING

We carry out monitoring to quantify and assess the condition of flora and fauna using both visual and remote methods. We engage in the control and eradication of exotic-invasive species that affect mangroves and dunes.





BASELINE AND WETLAND MONITORING

We work on the preservation and restoration of wetlands by applying technical criteria focused on establishing an environmental and biodiversity baseline, designing project-specific actions, and monitoring effectiveness and sustainability.

We also employ technology and methodologies to quantify and analyze mangrove vegetation and to conduct carbon inventories in both preserved and restored areas.



COMMUNITY ENGAGEMENT

We understand that the role of local communities is crucial. Our experience has shown that conservation efforts are significantly more effective when local populations derive real benefits from these initiatives.



ATEC
Asesoría Técnica y
Estudios Costeros

CONTACT US

Address: 63B Street #221 between 124D St and 122 St, Yucalpén neighborhood, Mérida, Yucatán, Mexico

E-mail: contacto@atecscp.com

Phone: +52 999 371 6205

Mobile: +52 999 225 2210

Website: <https://atecscp.com>



ATEC

Asesoría Técnica y
Estudios Costeros